

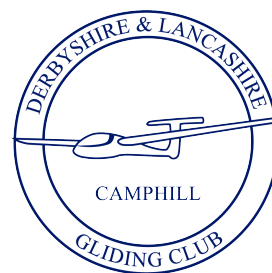
Derbyshire & Lancashire Gliding Club

Great Hucklow, Derbyshire, SK17 8RQ

Office 01298 871270

Clubhouse 01298 871207

Launch Point 07977 850208



Remote Landing Fields

These pictures identify fields, local to the airfield that Camphill pilots have successfully landed in.

No advice is given about which field to choose nor when. That decision is left to the pilot on the day

- No advice is given about how best to arrange a landing into any of the fields.
- The only advice is to study the pictures and become familiar with the location of the fields from the air and visit them on the ground – preferably in the company of an instructor.

The British Gliding Association (BGA) offers advice about landing in fields.

Find more information at <https://members.gliding.co.uk/pilot-resources-flying-training/field-landing/>

When looking for a field to land in, consider the following:

- Surface wind
- Size
- Surroundings
- Slopes
- Livestock
- Surface

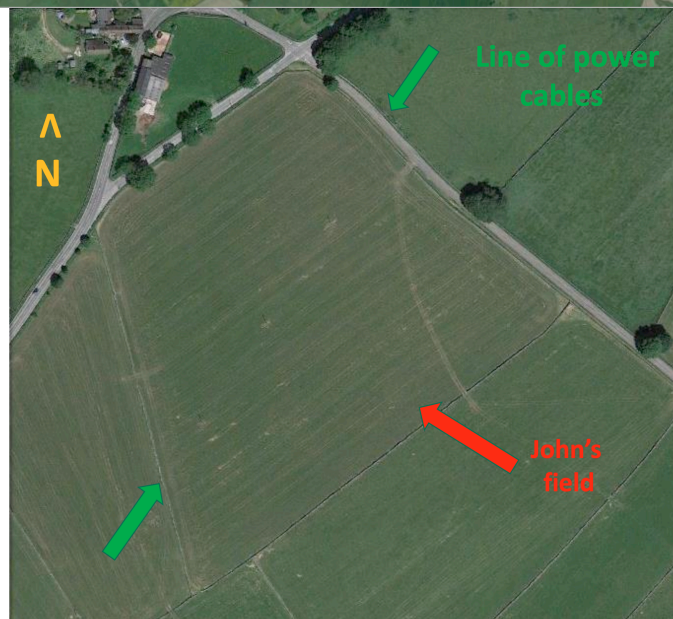
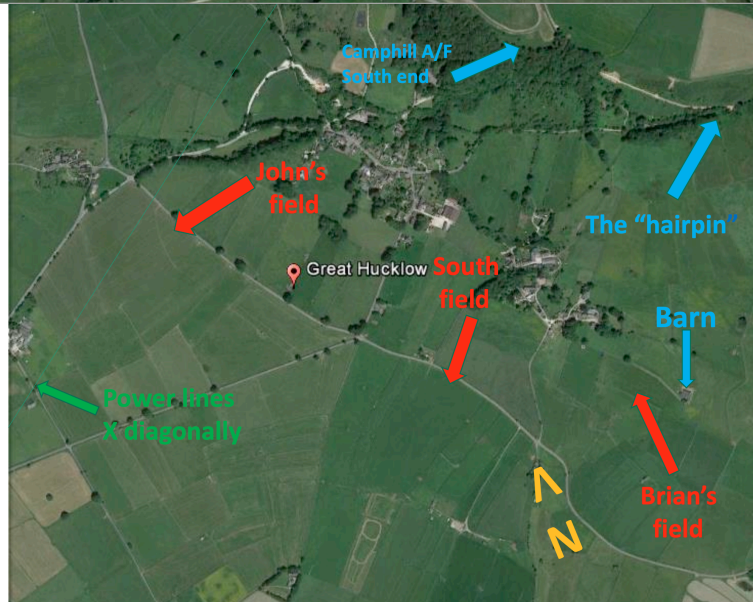
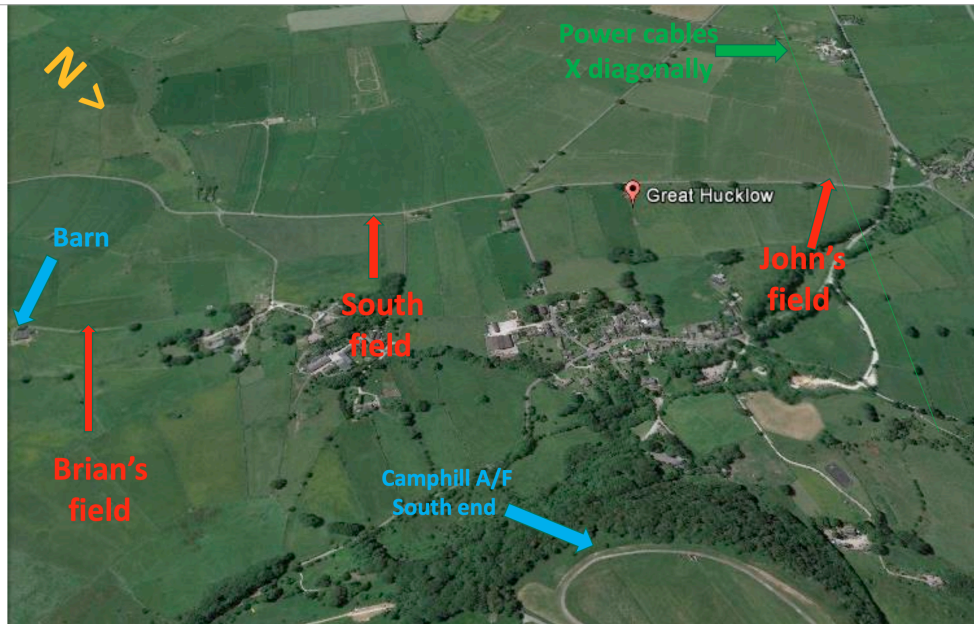
All of the fields in this document are used for grazing/silage so beware that some fields may contain livestock or long grass.

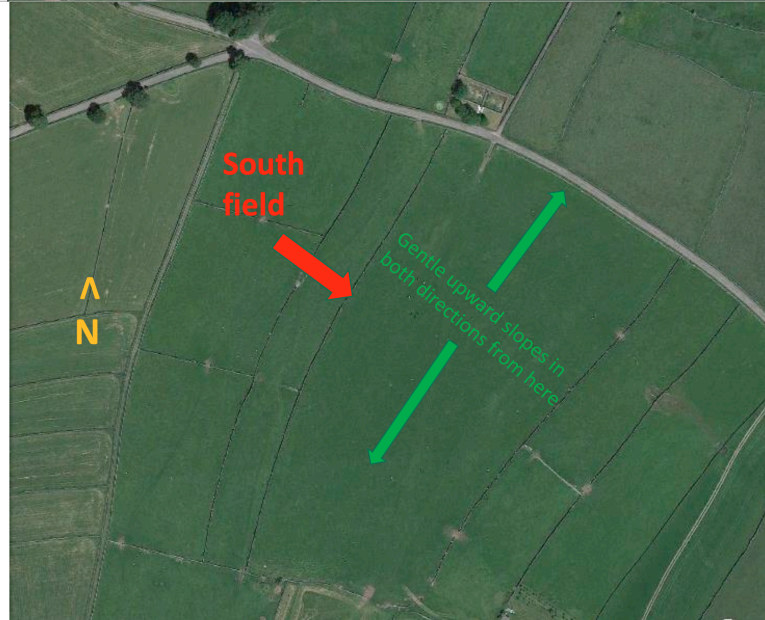
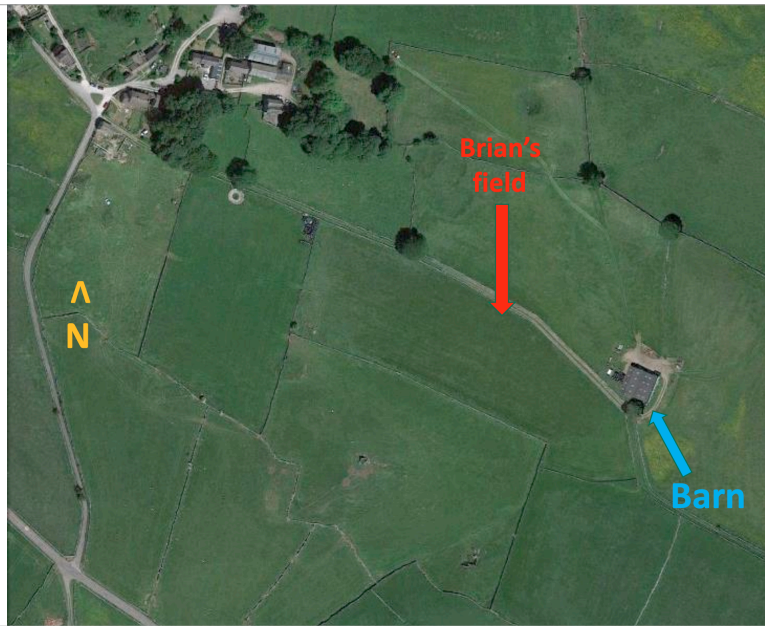
This document is split up into four sections, showing fields from the North South, South West and West.

Key

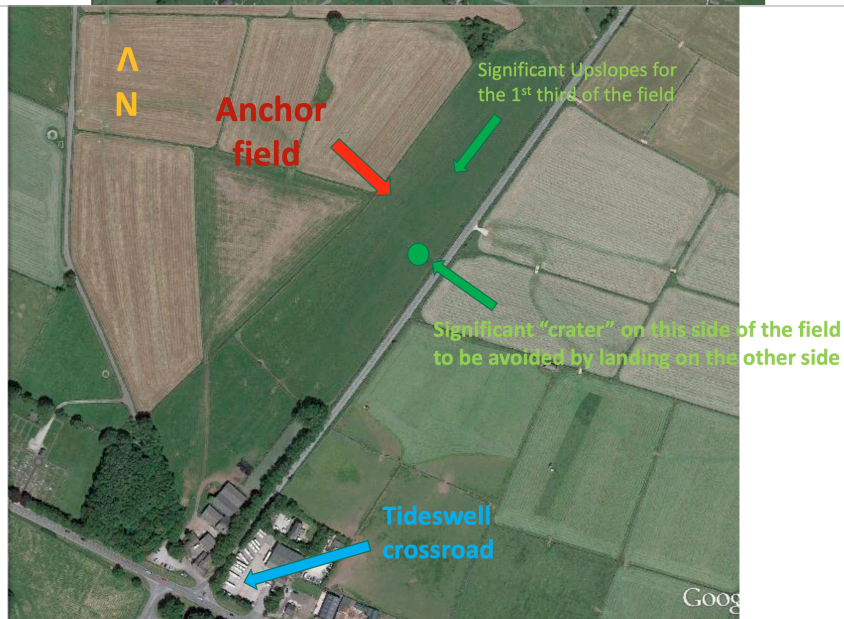
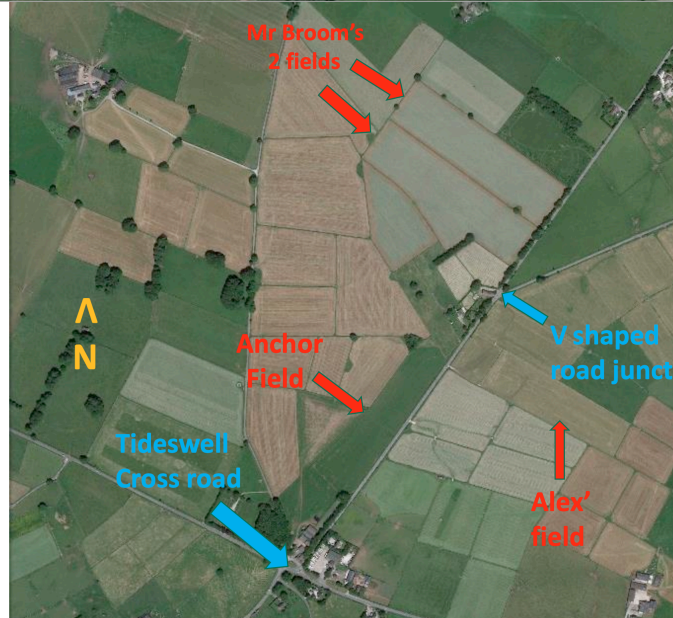
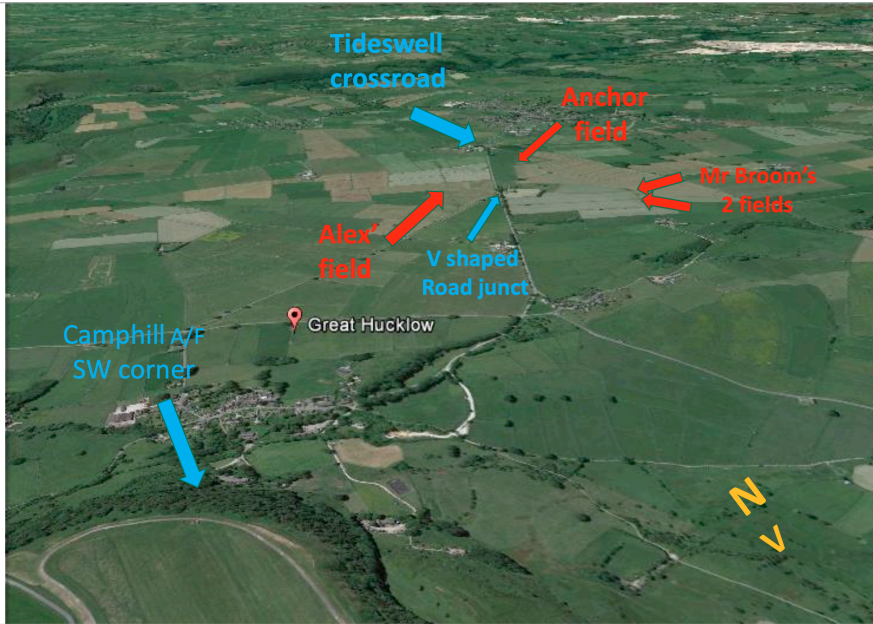
Colour	Description	Colour	Description
RED	Highlighted fields	YELLOW	North
BLUE	Useful landmarks	GREEN	Points of interest

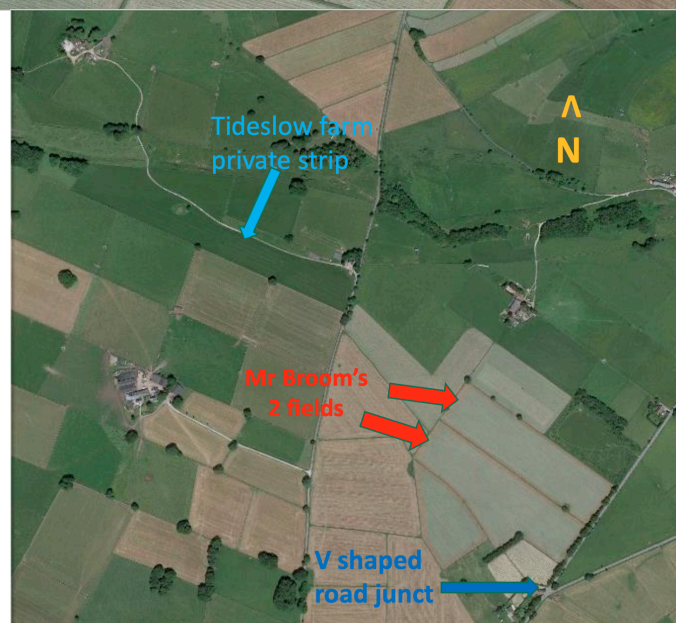
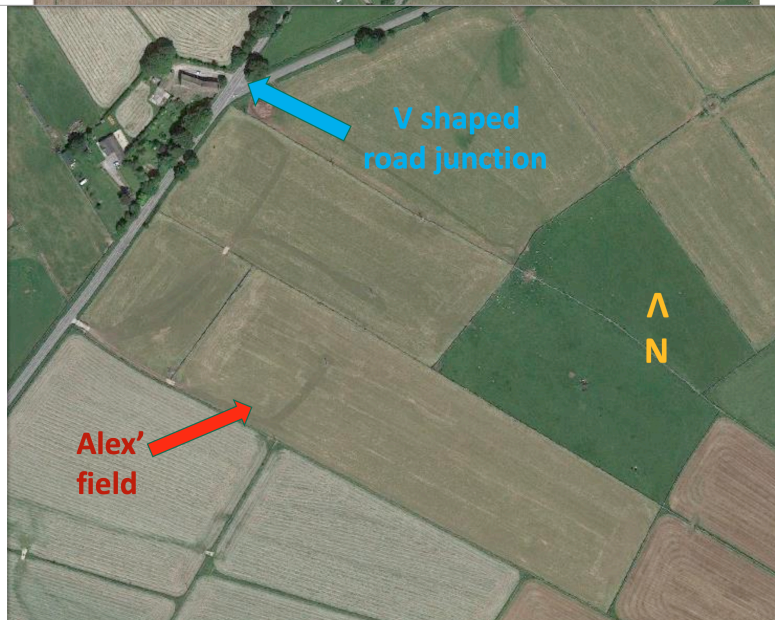
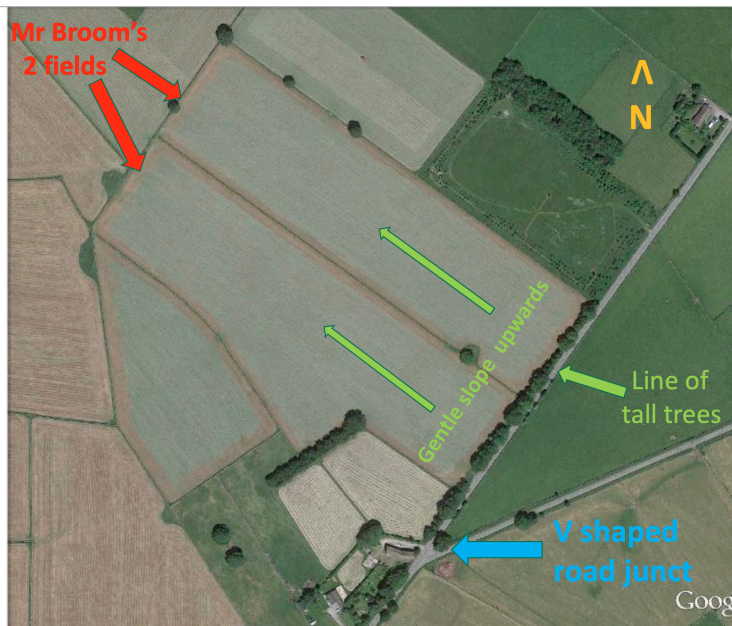
To the South



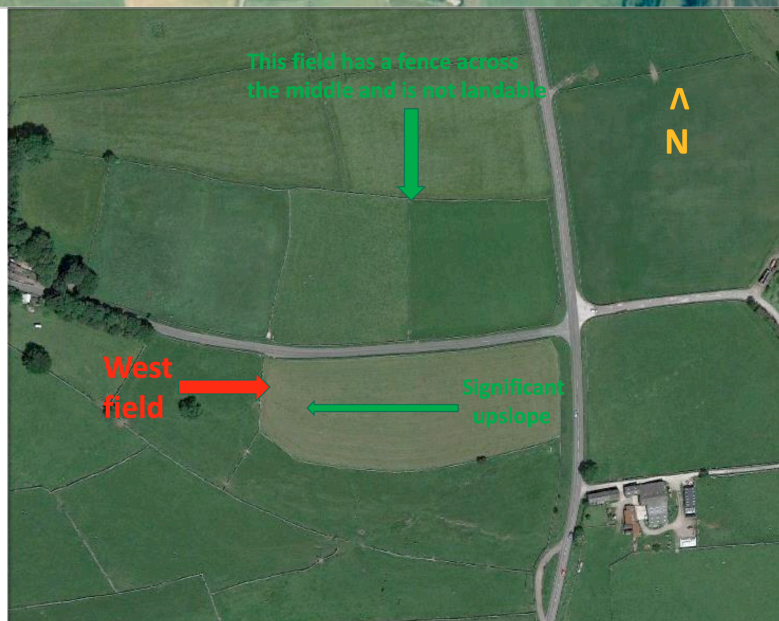
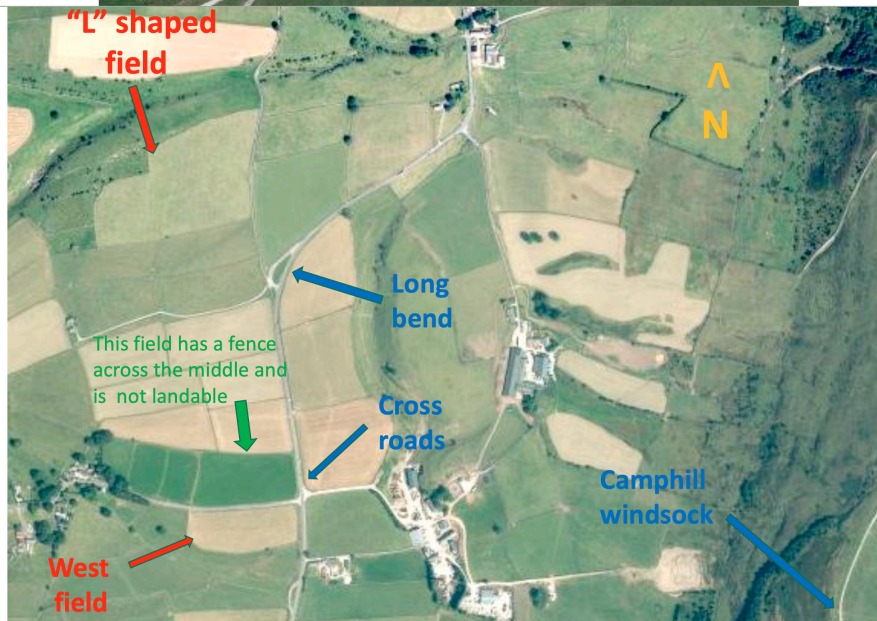
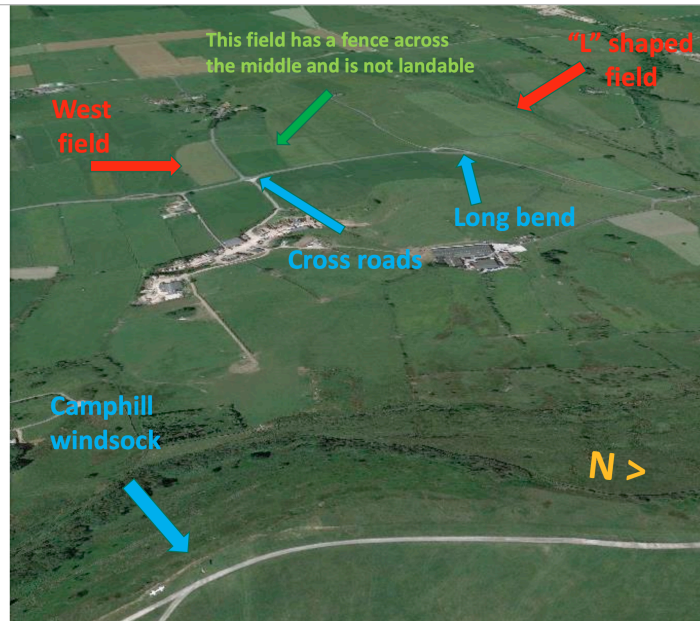


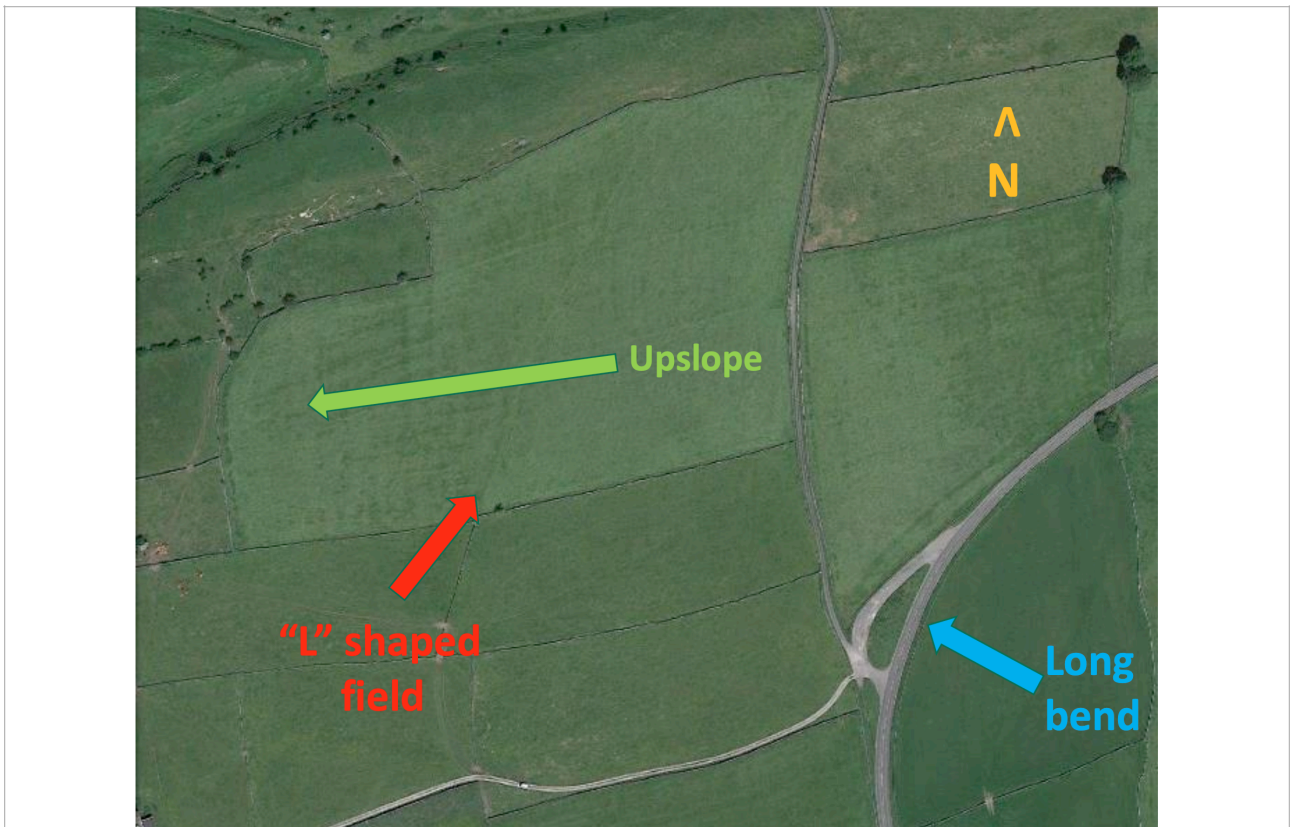
To the South West





To the West





To the North

